

D THE "X-RAY RADIATION PRECAUTION", "SAFETY
PAGE 2 OF THIS MANUAL.

Schematic diagram and the parts list designate components
and should be replaced only with types identical to those
mounting position of replacements is to be identical with
and carefully the PRODUCT SAFETY NOTICE on page 2. Do
not servicing.

NOTE:

1. RESISTOR Resistance is shown in ohm [K = 1.000, M = 1.000.000]. A resistor, unless otherwise noted as the following marks.
1/2R = Metal or Metal oxide of 1/2 watt 1/2S = C
1RF = Fuse resistor of 1 watt 10W = C
K = $\pm 10\%$ G = $\pm 2\%$ F = $\pm 1\%$
2. CAPACITOR Unless otherwise noted in schematic, all capacitor values are more than 1 in pF.
All capacitors are ceramic 50V, unless otherwise noted as
+ Electrolytic capacitor $\text{---} \text{---} \text{---}$ Mylar cap
3. The parts indicated with " Δ " have special characteristics, and show

TO SP

R601 4P

R602 4P

R603 4P

R604 4P

R605 4P

R606 4P

R607 4P

R608 4P

R609 4P

R610 4P

R611 4P

R612 4P

R613 4P

R614 4P

R615 4P

R616 4P

R617 4P

R618 4P

R619 4P

R620 4P

R621 4P

R622 4P

R623 4P

R624 4P

R625 4P

R626 4P

R627 4P

R628 4P

R629 4P

R630 4P

R631 4P

R632 4P

R633 4P

R634 4P

R635 4P

R636 4P

R637 4P

R638 4P

R639 4P

R640 4P

R641 4P

R642 4P

R643 4P

R644 4P

R645 4P

R646 4P

R647 4P

R648 4P

R649 4P

R650 4P

R651 4P

R652 4P

R653 4P

R654 4P

R655 4P

R656 4P

R657 4P

R658 4P

R659 4P

R660 4P

R661 4P

R662 4P

R663 4P

R664 4P

R665 4P

R666 4P

R667 4P

R668 4P

R669 4P

R670 4P

R671 4P

R672 4P

R673 4P

R674 4P

R675 4P

R676 4P

R677 4P

R678 4P

R679 4P

R680 4P

R681 4P

R682 4P

R683 4P

R684 4P

R685 4P

R686 4P

R687 4P

R688 4P

R689 4P

R690 4P

R691 4P

R692 4P

R693 4P

R694 4P

R695 4P

R696 4P

R697 4P

R698 4P

R699 4P

R700 4P

R701 4P

R702 4P

R703 4P

R704 4P

R705 4P

R706 4P

R707 4P

R708 4P

R709 4P

R710 4P

R711 4P

R712 4P

R713 4P

R714 4P

R715 4P

R716 4P

R717 4P

R718 4P

R719 4P

R720 4P

R721 4P

R722 4P

R723 4P

R724 4P

R725 4P

R726 4P

R727 4P

R728 4P

R729 4P

R730 4P

R731 4P

R732 4P

R733 4P

R734 4P

R735 4P

R736 4P

R737 4P

R738 4P

R739 4P

R740 4P

R741 4P

R742 4P

R743 4P

R744 4P

R745 4P

R746 4P

R747 4P

R748 4P

R749 4P

R750 4P

R751 4P

R752 4P

R753 4P

R754 4P

R755 4P

R756 4P

R757 4P

R758 4P

R759 4P

R760 4P

R761 4P

R762 4P

R763 4P

R764 4P

R765 4P

R766 4P

R767 4P

R768 4P

R769 4P

R770 4P

R771 4P

R772 4P

R773 4P

R774 4P

R775 4P

R776 4P

R777 4P

R778 4P

R779 4P

R780 4P

R781 4P

R782 4P

R783 4P

R784 4P

R785 4P

R786 4P

R787 4P

R788 4P

R789 4P

R790 4P

R791 4P

R792 4P

R793 4P

R794 4P

R795 4P

R796 4P

R797 4P

R798 4P

R799 4P

R800 4P

R801 4P

R802 4P

R803 4P

R804 4P

R805 4P

R806 4P

R807 4P

R808 4P

R809 4P

R810 4P

R811 4P

R812 4P

R813 4P

R814 4P

R815 4P

R816 4P

R817 4P

R818 4P

R819 4P

R820 4P

R821 4P

R822 4P

R823 4P

R824 4P

R825 4P

R826 4P

R827 4P

R828 4P

R829 4P

R830 4P

R831 4P

R832 4P

R833 4P

R834 4P

R835 4P

R836 4P

R837 4P

R838 4P

R839 4P

R840 4P

R841 4P

R842 4P

R843 4P

R844 4P

R845 4P

R846 4P

R847 4P

R848 4P

R849 4P

R850 4P

R851 4P

R852 4P

R853 4P

R854 4P

R855 4P

R856 4P

R857 4P

R858 4P

R859 4P

R860 4P

R861 4P

R862 4P

R863 4P

R864 4P

R865 4P

R866 4P

R867 4P

R868 4P

R869 4P

R870 4P

R871 4P

R872 4P

R873 4P

R874 4P

R875 4P

R876 4P

R877 4P

R878 4P

R879 4P

R880 4P

R881 4P

R882 4P

R883 4P

R884 4P

R885 4P

R886 4P

R887 4P

R888 4P

R889 4P

R890 4P

R891 4P

R892 4P

R893 4P

R894 4P

R895 4P

R896 4P

R897 4P

R898 4P

R899 4P

R900 4P

R901 4P

R902 4P

R903 4P

R904 4P

R905 4P

R906 4P

100, M = 1.000.000]. All resistors are 1/6W and 5% tolerance carbon
the following marks.

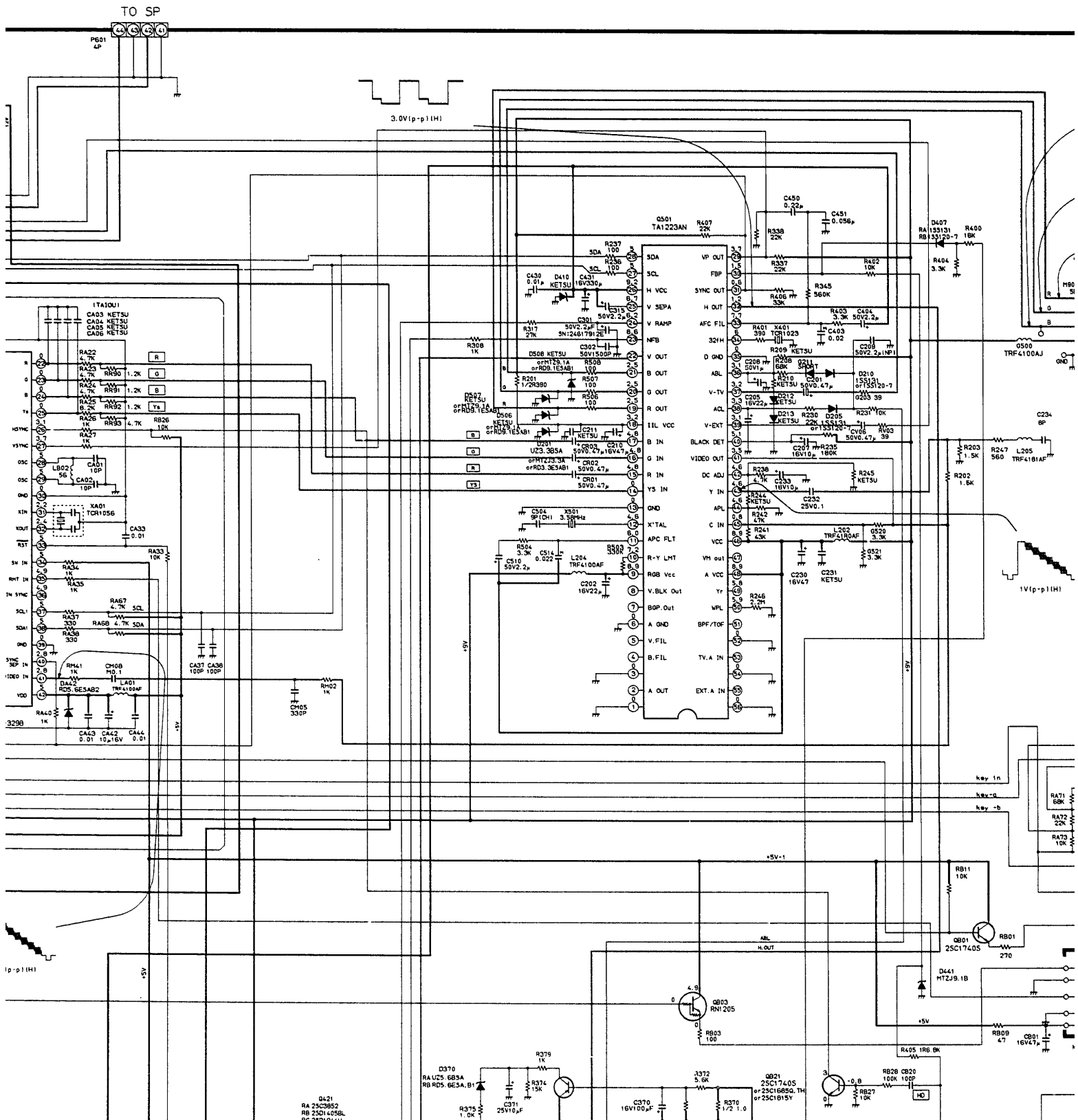
watt 1/2S = Carbon compstion of 1/2 watt
10W = Cement of 10 watt

, all capacitor values less than 1 are expressed in μF , and the values

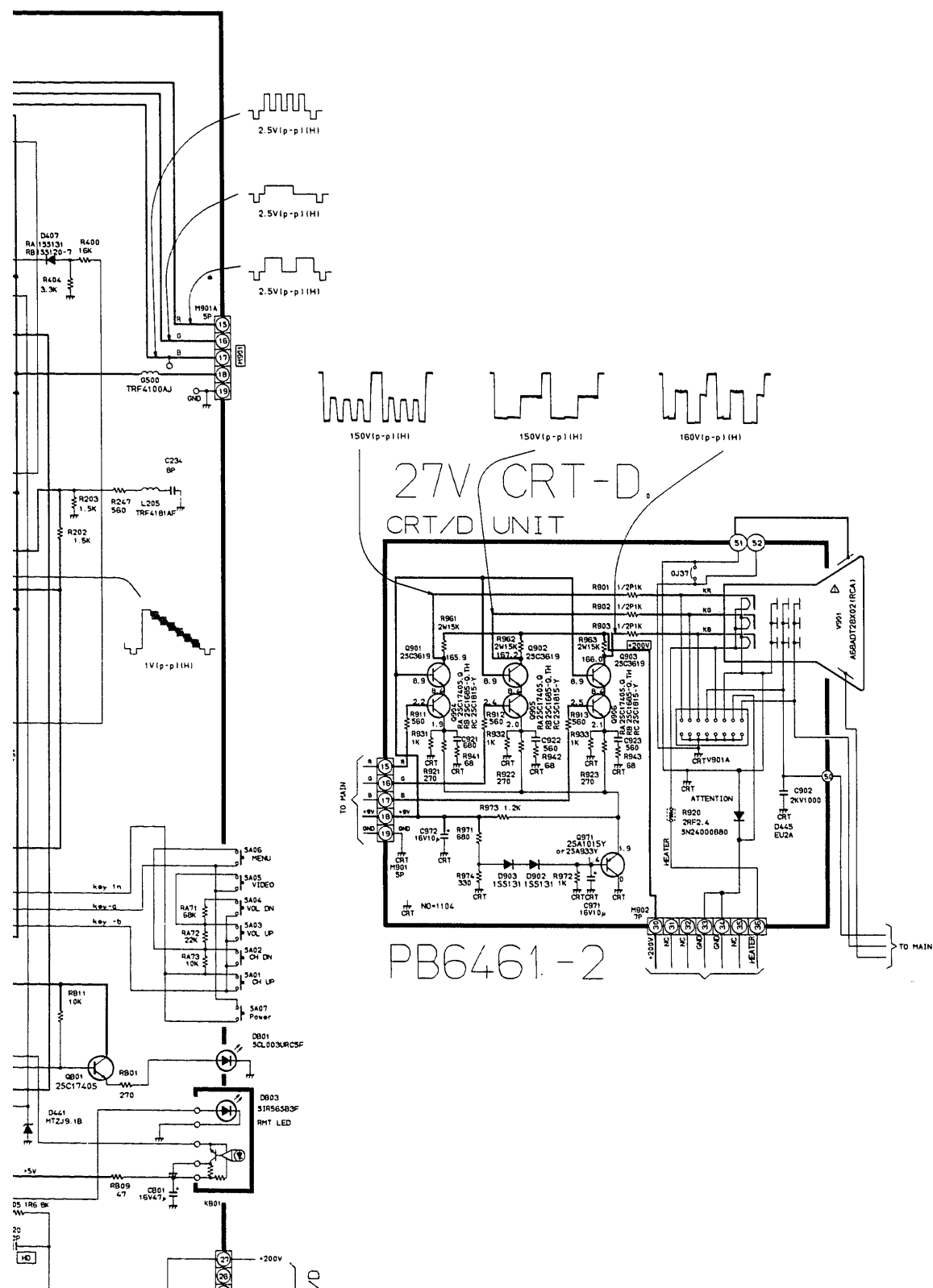
ess otherwise noted as the following marks.

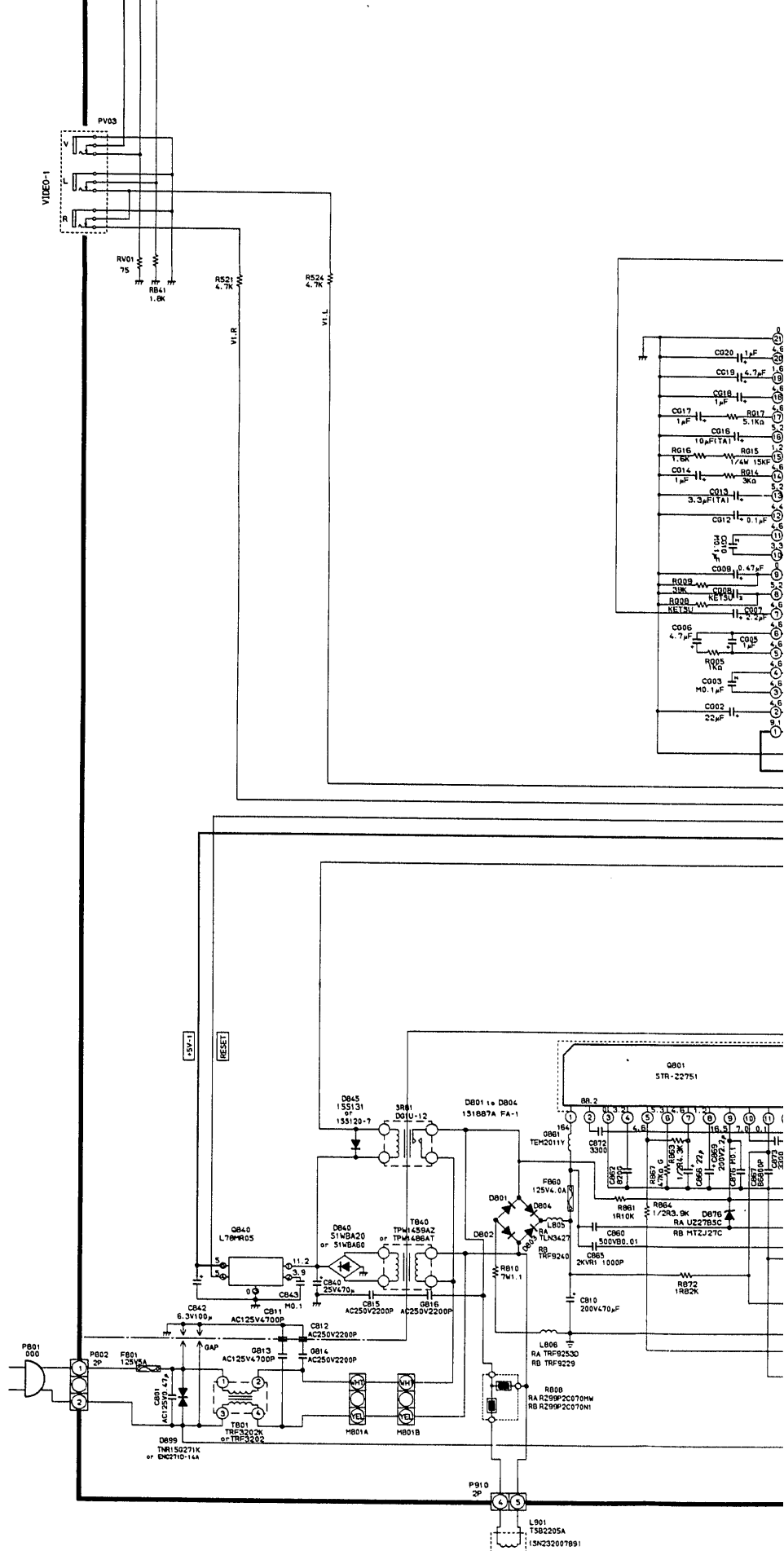
 Mylar capacitor
characteristics, and should be replaced with identical parts only.

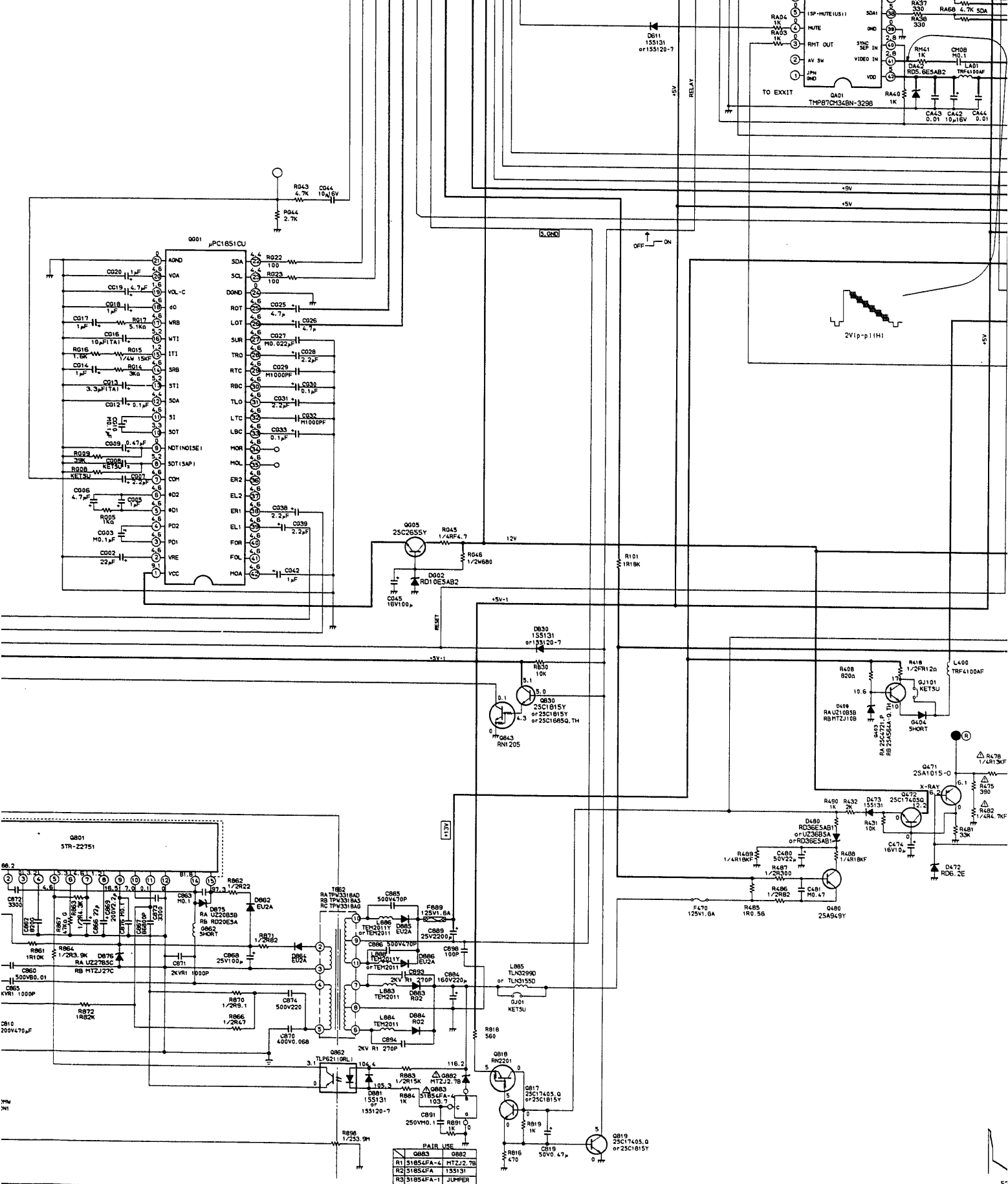
4. Voltages read with DIGITAL MULTI-METER from point indicate at normal, line voltage 120 volts.
5. Waveforms are taken receiving color bar signal with enou
6. Voltage reading shown are nominal values and may vary



bar signal with enough sensitivity.
values and may vary $\pm 20\%$ except H.V.







MAIN UNIT PB6461-1

